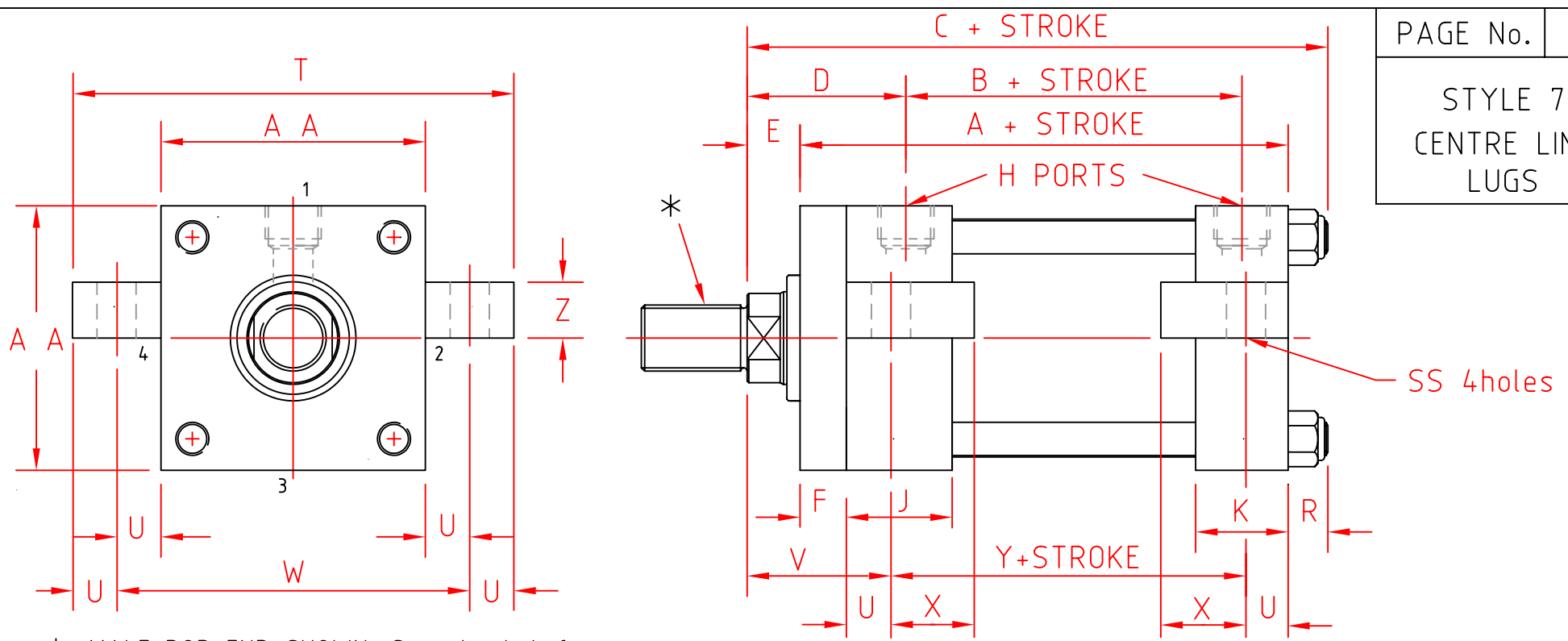


STYLE 7
CENTRE LINE
LUGS

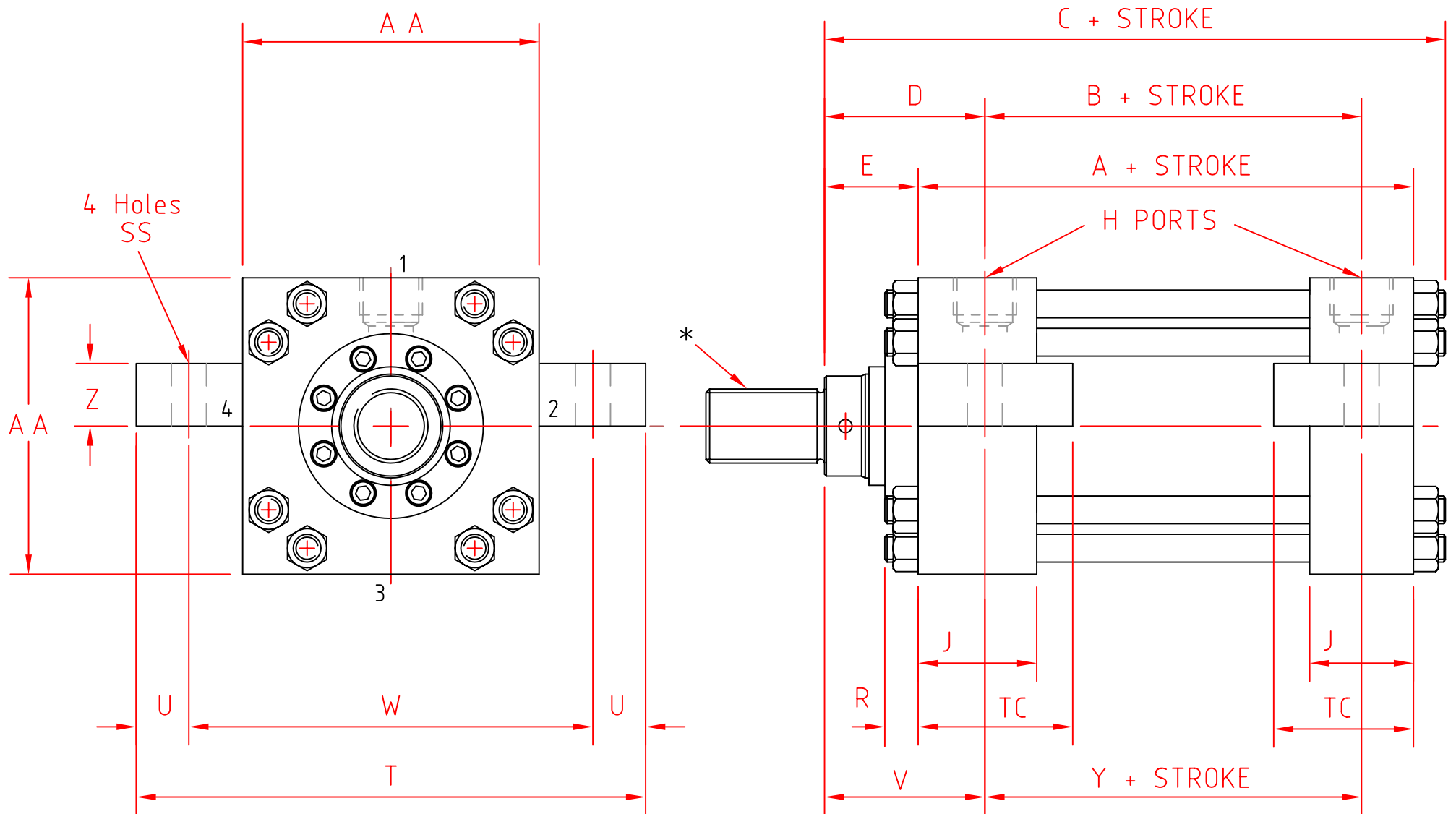


* MALE ROD END SHOWN See sheet 4 for male & female variations and dimensions

Single Slotted CUSH. ADJ.


Cross Slotted CUSH. Relief (Fixed)

CYLINDER SIZE	ROD DIA. E E	E	C	D	V	A	AA	B	F	H BSPP.	J	K	R	SS	T	U	W	X	Y	Z
HB 15 1.50" BORE	0.625" STD. 15.87	0.63" 15.87	6.13" 155.57	2.00" 50.8	1.38" 34.92	5.00"	2.50"	2.88"	0.38"	1/2"	1.75"	1.50"	0.50"	0.44"	4.00"	0.38"	3.25"	0.94"	3.88"	0.50"
	1.000" 25.4	1.00" 25.4	6.50" 165.1	2.38" 60.32	1.75" 44.45	127.0	63.5	73.02	9.52		44.45	38.1	12.7	11.11	101.6	9.52	82.55	23.81	98.42	12.7
HB 20 2.00" BORE	1.000" STD. 25.4	0.75" 19.05	6.63" 168.27	2.38" 60.32	1.88" 47.62	5.25"	3.00"	2.88"	0.62"	1/2"	1.75"	1.50"	0.63"	0.56"	5.00"	0.50"	4.00"	1.25"	3.62"	0.75"
	1.375" 34.92	1.00" 25.4	6.88" 174.63	2.63" 66.68	2.13" 53.98	133.35	76.2	73.02	15.87		44.45	38.1	15.87	14.28	127.0	12.7	101.6	31.75	92.07	19.05
HB 25 2.50" BORE	1.000" STD. 25.4	0.75" 19.05	6.75" 171.45	2.38" 60.32	2.06" 52.24	5.38"	3.50"	3.00"	0.62"	1/2"	1.75"	1.50"	0.63"	0.81"	6.25"	0.69"	4.88"	1.56"	3.38"	1.00"
	1.375" 34.92	1.00" 25.4	7.00" 177.8	2.63" 66.68	2.31" 58.73															
	1.750" 44.45	1.25" 31.75	7.25" 184.15	2.88" 73.02	2.56" 65.07															
HB 32 3.25" BORE	1.375" STD. 34.92	0.88" 22.22	7.88" 200.02	2.75" 69.85	2.31" 58.73	6.25"	4.50"	3.50"	0.75"	3/4"	2.00"	1.75"	0.75"	0.81"	7.25"	0.69"	5.88"	1.56"	4.13"	1.00"
	1.750" 44.45	1.13" 28.57	8.13" 206.5	3.00" 76.2	2.56" 65.07															
	2.000" 50.8	1.25" 31.75	8.25" 209.5	3.13" 79.38	2.69" 68.25															
HB 40 4.00" BORE	1.750" STD. 44.45	1.00" 25.4	8.38" 212.72	3.00" 76.2	2.75" 69.85	6.63"	5.00"	3.75"	0.88"	3/4"	2.00"	1.75"	0.75"	1.06"	8.50"	0.88"	6.75"	2.00"	4.00"	1.25"
	2.000" 50.8	1.13" 28.57	8.50" 215.9	3.13" 79.37	2.88" 73.02															
	2.500" 63.5	1.38" 34.92	8.75" 222.25	3.38" 85.73	3.13" 79.38															
HB 50 5.00" BORE	2.000" STD. 50.8	1.13" 28.57	9.31" 236.53	3.13" 79.37	2.88" 73.02	7.13"	6.50"	4.25"	0.88"	3/4"	2.00"	1.75"	1.06"	1.06"	10.0"	0.88"	8.25"	2.00"	4.50"	1.25"
	2.500" 63.5	1.38" 34.92	9.56" 242.88	3.38" 85.73	3.13" 79.37															
	3.000" 76.2	1.38" 34.92	9.56" 242.88	3.38" 85.73	3.13" 79.37															
	3.500" 88.9	1.38" 34.92	9.56" 242.88	3.38" 85.73	3.13" 79.37															
HB 60 6.00" BORE	2.500" STD. 63.5	1.25" 31.75	10.75"	3.50"	3.38"	8.38"	7.50"	4.88"	1.00"	1.00"	2.25"	2.25"	1.12"	1.31"	12.0"	1.13"	9.75"	2.50"	5.13"	1.50"
	3.000" 76.2	1.25" 31.75																		
	3.500" 88.9	1.25" 31.75																		
	4.000" 101.6	1.25" 31.75																		
HB 70 7.00" BORE	3.000" STD. 76.2	1.25" 31.75	12.00"	3.81"	3.63"	9.50"	8.50"	5.38"	1.00"	1,1/4"	2.75"	2.75"	1.25"	1.56"	14.0"	1.38"	11.25	2.88"	5.75"	1.75"
	3.500" 88.9	1.25" 31.75																		
	4.000" 101.6	1.25" 31.75																		
	5.000" 127.0	1.25" 31.75																		
HB 80 8.00" BORE	3.500" STD. 88.9	1.25" 31.75	13.12"	3.94"	3.63"	10.50"	9.50"	6.13"	1.00"	1,1/2"	3.00"	3.00"	1.38"	1.56"	15.0"	1.38"	12.25"	2.88"	6.75"	1.75"
	4.000" 101.6	1.25" 31.75																		
	5.000" 127.0	1.25" 31.75																		
	5.500" 139.7	1.25" 31.75																		



* MALE ROD END SHOWN See sheet 4A for male & female variations and dimensions

 Single Slotted CUSH. ADJ.

 Cross Slotted CUSH. Relief (Fixed)

CYLINDER SIZE	ROD DIA. E E	E	C	D	V	A	AA	B	H	J	R	SS Ø	T	U	W	TC	Y	Z
HB 100 10.00" BORE	4.50" 114.3	2.94" 74.6	16.63" 422.27	4.75" 120.65	4.56" 115.88	12.13" 307.97	12.63" 320.67	8.50" 215.90	2.00" BSPP.	3.69" 93.65	1.56" 39.68	1.56" 39.68	19.13" 485.7	1.63" 41.27	15.88" 403.22	5.13" 130.17	8.88" 225.42	2.25" 57.15
	5.00" STD. 127.0	3.19" 80.95	16.88" 428.63	5.00" 127.0	4.81" 122.23													
	5.50" 139.7	3.19" 80.95	16.88" 428.63	5.00" 127.0	4.81" 122.23													
	7.00" 177.8	3.50" 88.9	17.19" 436.56	5.31" 134.93	5.13" 130.17													
HB 120 12.00" BORE	5.50" 139.7	3.19" 80.95	19.78" 502.4	5.44" 138.09	5.19" 131.76	14.5" 368.30	14.88" 377.82	10.00" 254.00	2.50" SAE.	4.44" 112.71	2.09" 53.08	1.56" 39.68	22.88" 581.1	2.00" 50.8	18.88" 479.42	6.25" 158.75	10.50" 266.7	3.00" 76.2
	7.00" STD. 177.8	3.50" 88.9	20.09" 510.28	5.75" 146.05	5.50" 139.7													
	8.00" 203.2	4.00" 101.6	20.59" 522.98	6.25" 158.75	6.00" 152.4													