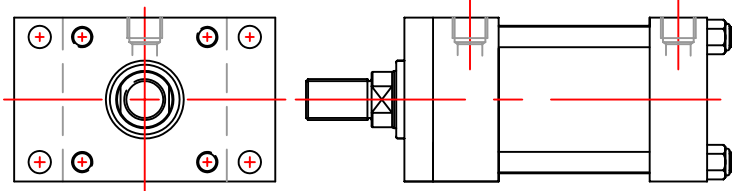
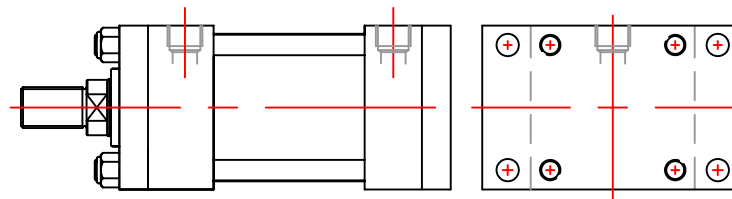


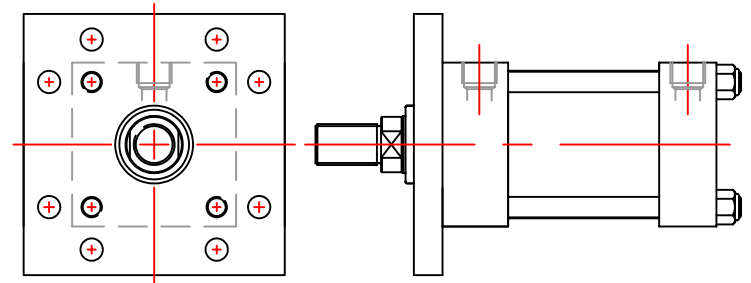
TIE RODS EXTENDED
 STYLE 1 NFPA MX3 HEAD END ONLY
 STYLE 1A NFPA MX2 CAP END ONLY
 STYLE 1B NFPA MX1 BOTH ENDS



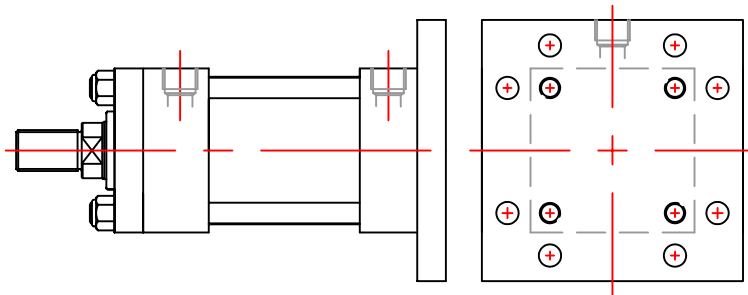
STYLE 2 NFPA MF1
 HEAD RECTANGULAR FLANGE



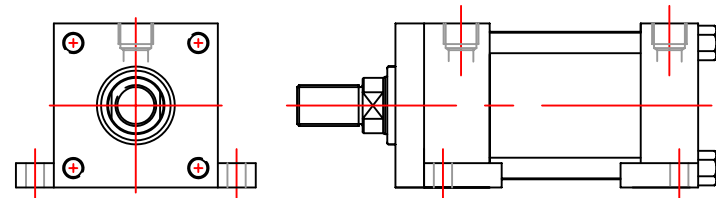
STYLE 3 NFPA MF2
 CAP RECTANGULAR FLANGE



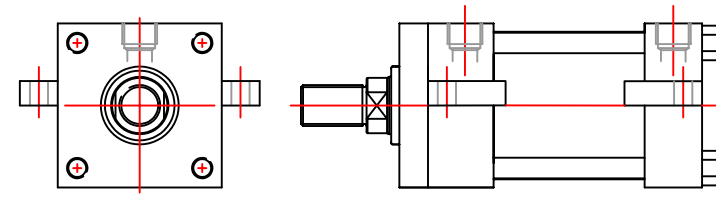
STYLE 4 NFPA MF5
 HEAD SQUARE FLANGE



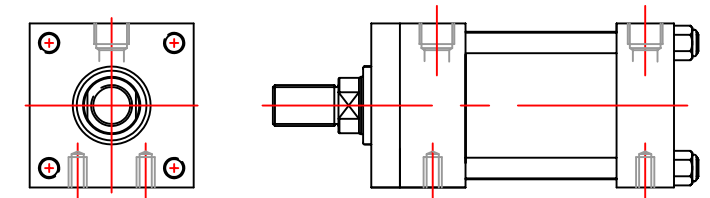
STYLE 5 NFPA MF6
 CAP SQUARE FLANGE



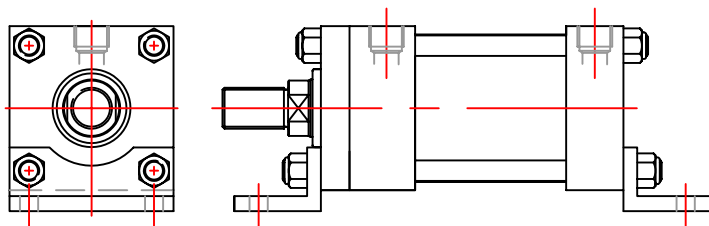
STYLE 6 NFPA MS2
 SIDE LUGS



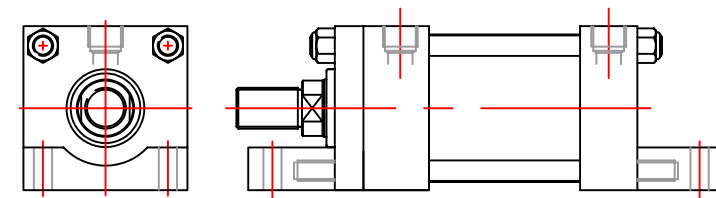
STYLE 7 NFPA MS3
 CENTRE-LINE LUGS



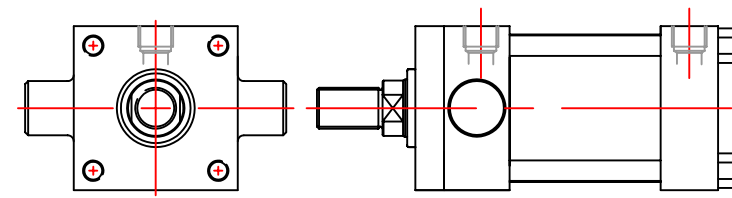
STYLE 8 NFPA MS4
 SIDE TAPPED



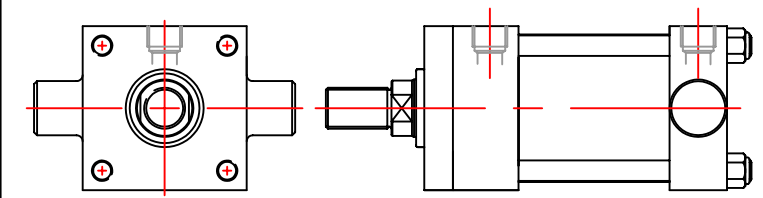
STYLE 9 NFPA MS1
 END ANGLES



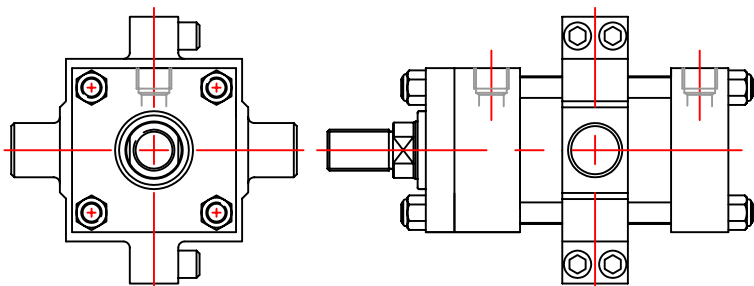
STYLE 10 NFPA MS7
 END LUGS



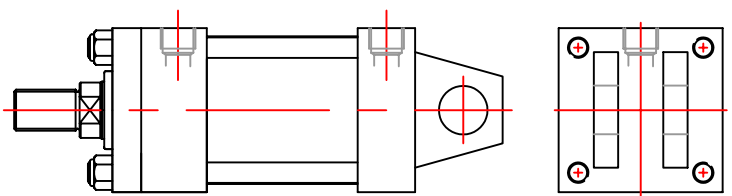
STYLE 11 NFPA MT1
 HEAD TRUNNION



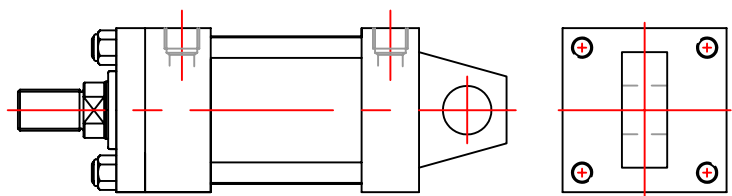
STYLE 12 NFPA MT2
 CAP TRUNNION



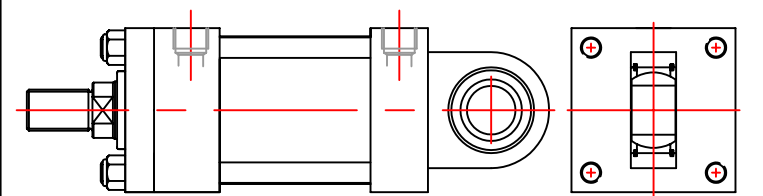
STYLE 13 NFPA MT4
 INTERMEDIATE TRUNNION



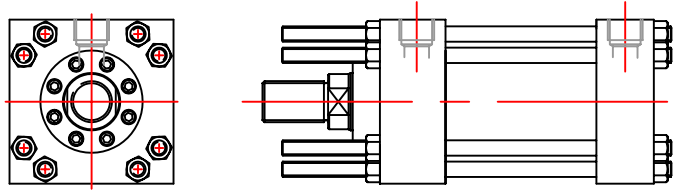
STYLE 14 NFPA MP1
 CAP FIXED CLEVIS



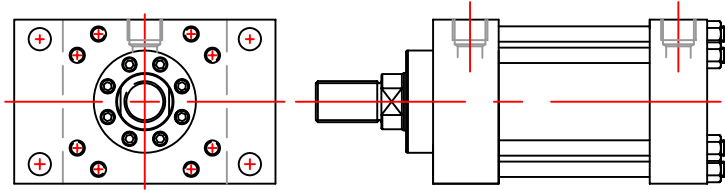
STYLE 14A NFPA MP3
 CAP FIXED EYE



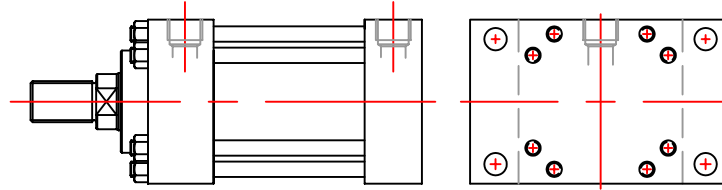
STYLE 14B NFPA MU3
 CAP SPHERICAL BEARING



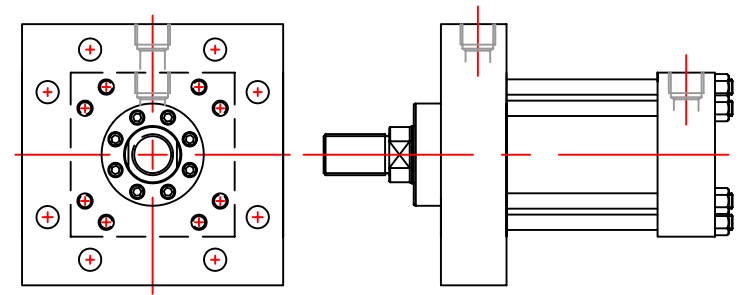
TIE RODS EXTENDED
 STYLE 1 NFPA MX3 HEAD END ONLY
 STYLE 1A NFPA MX2 CAP END ONLY
 STYLE 1B NFPA MX1 BOTH ENDS



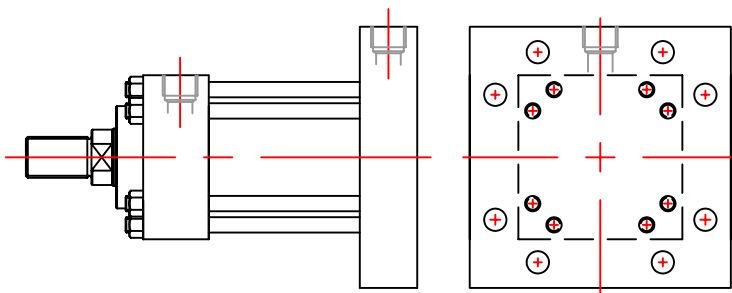
STYLE 2 NFPA MFI
 HEAD RECTANGULAR FLANGE



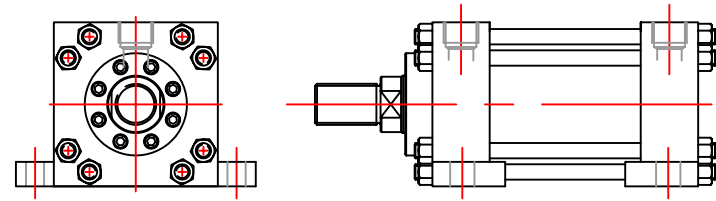
STYLE 3 NFPA MF2
 CAP RECTANGULAR FLANGE



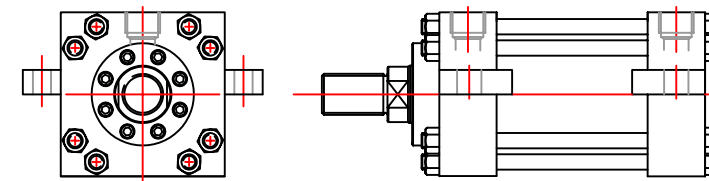
STYLE 4 NFPA MF5
 HEAD SQUARE FLANGE



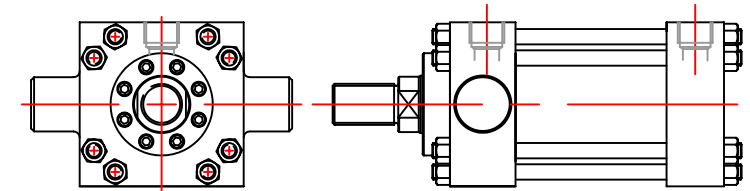
STYLE 5 NFPA MF6
 CAP SQUARE FLANGE



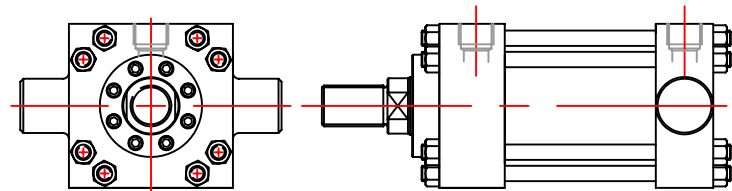
STYLE 6 NFPA MS2
 SIDE LUGS



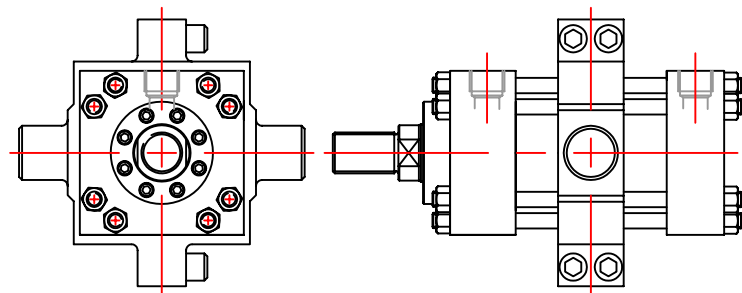
STYLE 7 NFPA MS3
 CENTRE-LINE LUGS



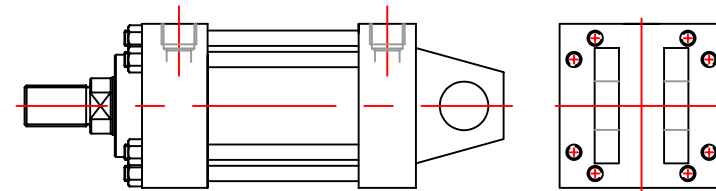
STYLE 11 NFPA MT1
 HEAD TRUNNION



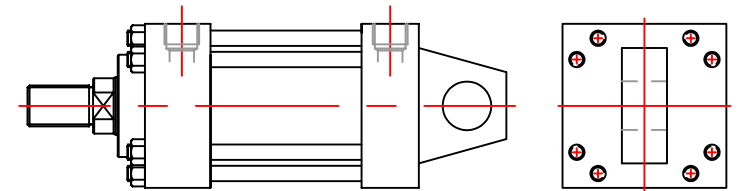
STYLE 12 NFPA MT2
 CAP TRUNNION



STYLE 13 NFPA MT4
 INTERMEDIATE TRUNNION



STYLE 14 NFPA MP1
 CAP FIXED CLEVIS



STYLE 14A NFPA MP3
 CAP FIXED EYE